

# JAMES GILES SCHOOL

School Improvement Plan

2026-2027



# SCHOOL IMPROVEMENT TEAM



**Bob Biedke**

Giles Principal



**Alyssa Gulo**

Assistant Principal



**Judy Figliuolo**

6th Grade  
Special Education



**Steve Hovorka**

7th & 8th Grade  
Science



**Annamarie Piotrowski**

7th & 8th Grade  
Social Studies



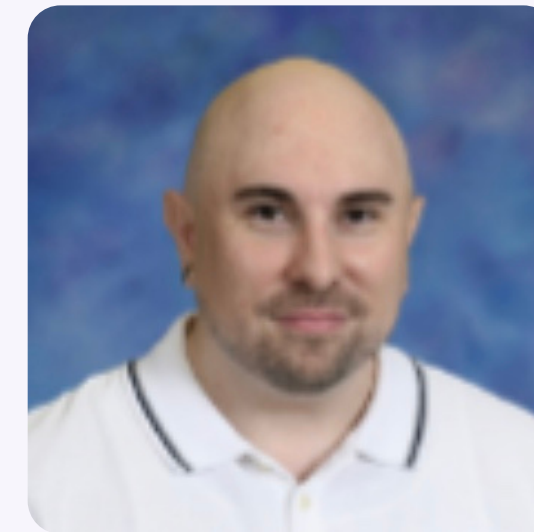
**Jillian Hanson**

5th & 6th Grade  
ELA



**Elise Salo**

Social Worker



**Daniel Nickerson**

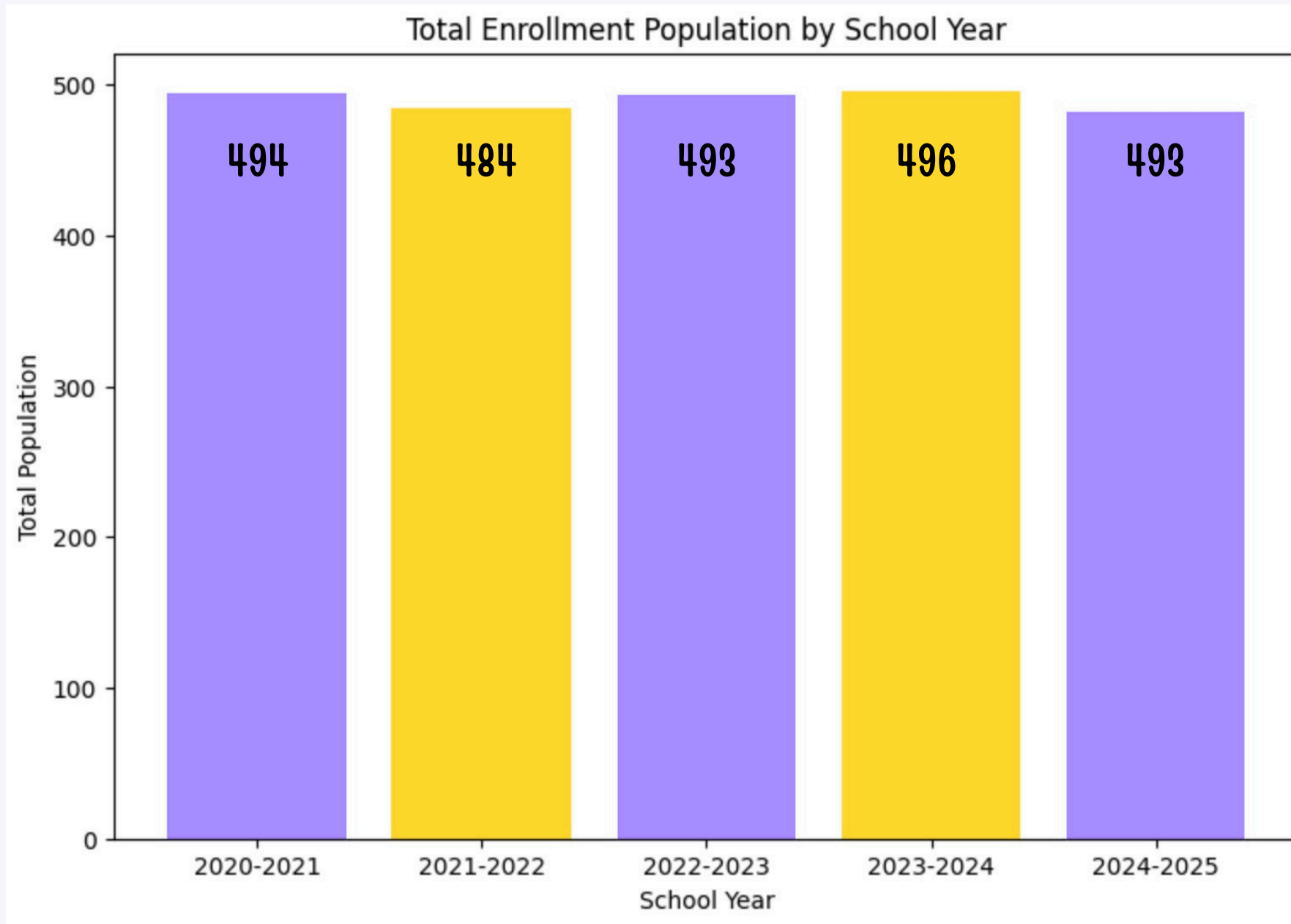
7th/8th Grade  
Spanish



**Anthony Coletta**

5th & 6th Grade  
Social Studies

# GILES SCHOOL ENROLLMENT



## 2025-2026 SY

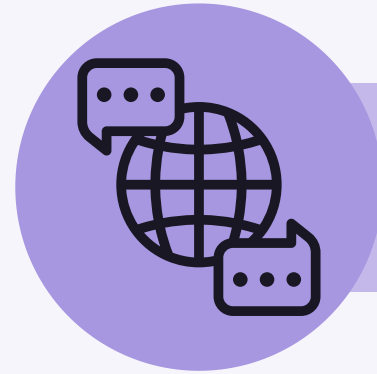
- Fifth grade - 129 students
- Sixth Grade - 114 students
- Seventh Grade - 119 students
- Eighth Grade - 120 students

---

## Certified Staff

- 32.5 Certified Teachers
- 3 Paraprofessionals
- 1 School Nurse
- 5 Support Staff
- 2.2 Building Administrators

# 2025 SCHOOL DATA



**25.3% ML students**



**10.3% students with IEPs**



**42.9% Free & Reduced**

# OUR STUDENTS ARE GILESMMADE!



P

Positive

R

Respectful

I

Inclusive

D

Determined

E

Enagaged

# SCHOOL STRENGTHS

## Check-in/Check-out Program

- 31 Students
- Participated 8 successfully exiting the program.

## Multilingual (ML) Program

- 17 Students Exited
- 10 were Ukrainian students

## Extra Curricular Activities

- LNAC Athletics
- Band
- Art Club
- PRIDE/S.P.A.C.E. Leaders

## Safety

- School Resource Officer
- Digital Hall Pass system
- Video Monitoring System
- Vape Sensors


GilesMade: Strengthened school culture through PBIS, PRIDE, & Buddy Activities


# MATH GROWTH

Mathematics

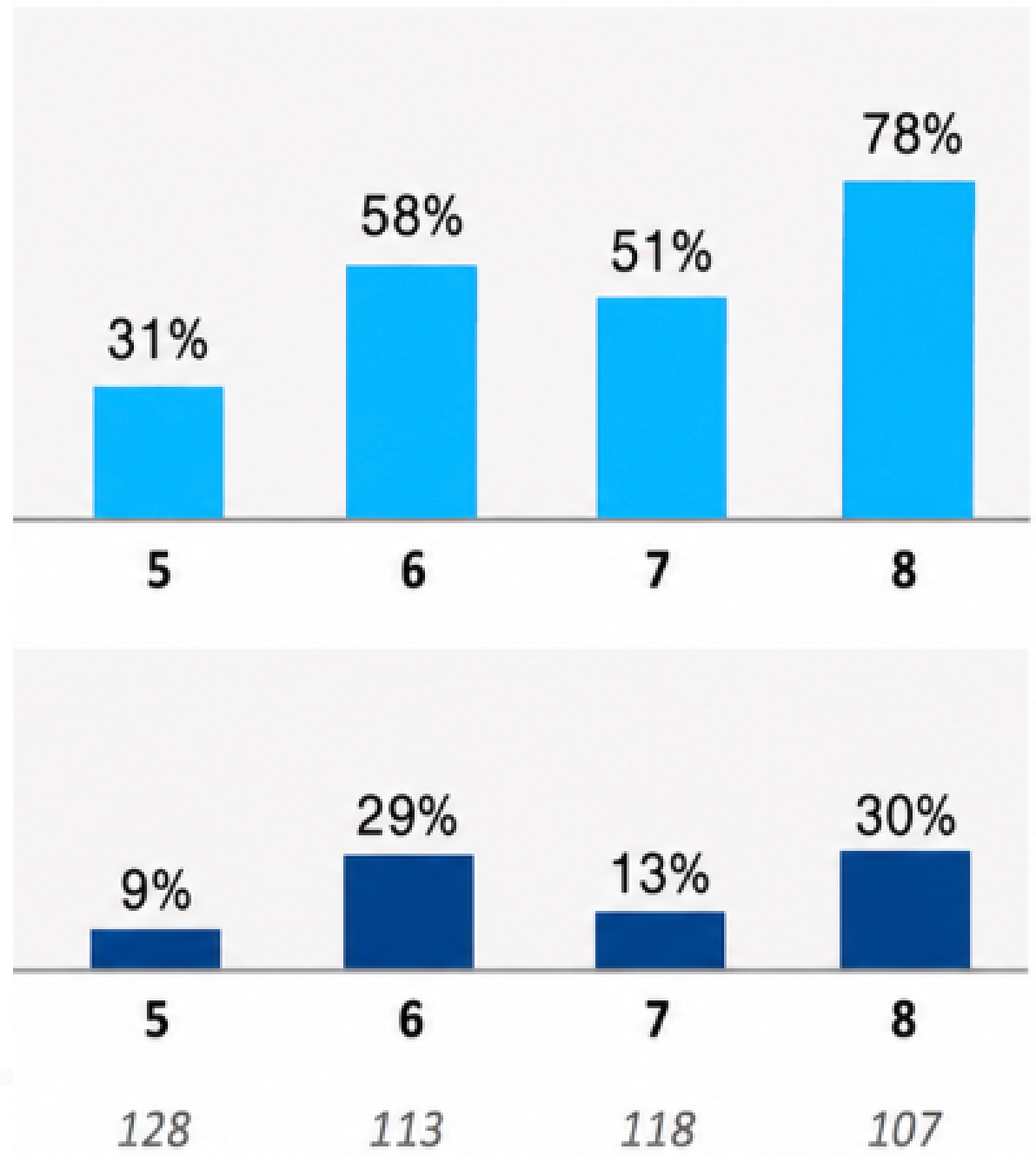
## How Are Students Progressing Toward Typical and Stretch Growth?

% Students Who Met Typical and Stretch Growth

 % Students Met *Typical* Growth

 % Students Met *Stretch* Growth

Students Included:



# MATH ACTION STEPS

## Collaborative Planning:

- Engage in ongoing Professional Learning Community (PLC) collaboration.
- Conduct structured peer observations to strengthen collaboration and instructional practice.

## Data-Driven Instruction:

- Establish individualized math goals for students and regularly monitor progress.
- Monitor intervention fidelity while maintaining current student goals and progress data.

## Targeted Instruction:

- Use flexible grouping and differentiated small-group instruction to address student needs.
- Collaborate with Multilingual teachers to design scaffolded, grade-level math instruction that ensures equitable access for all learners.

## Instructional Excellence and Student Engagement:

- Implement consistent schoolwide instructional practices that increase student engagement and promote high-quality learning experiences.

# MATH GOAL

## Goal 1: Math Achievement:

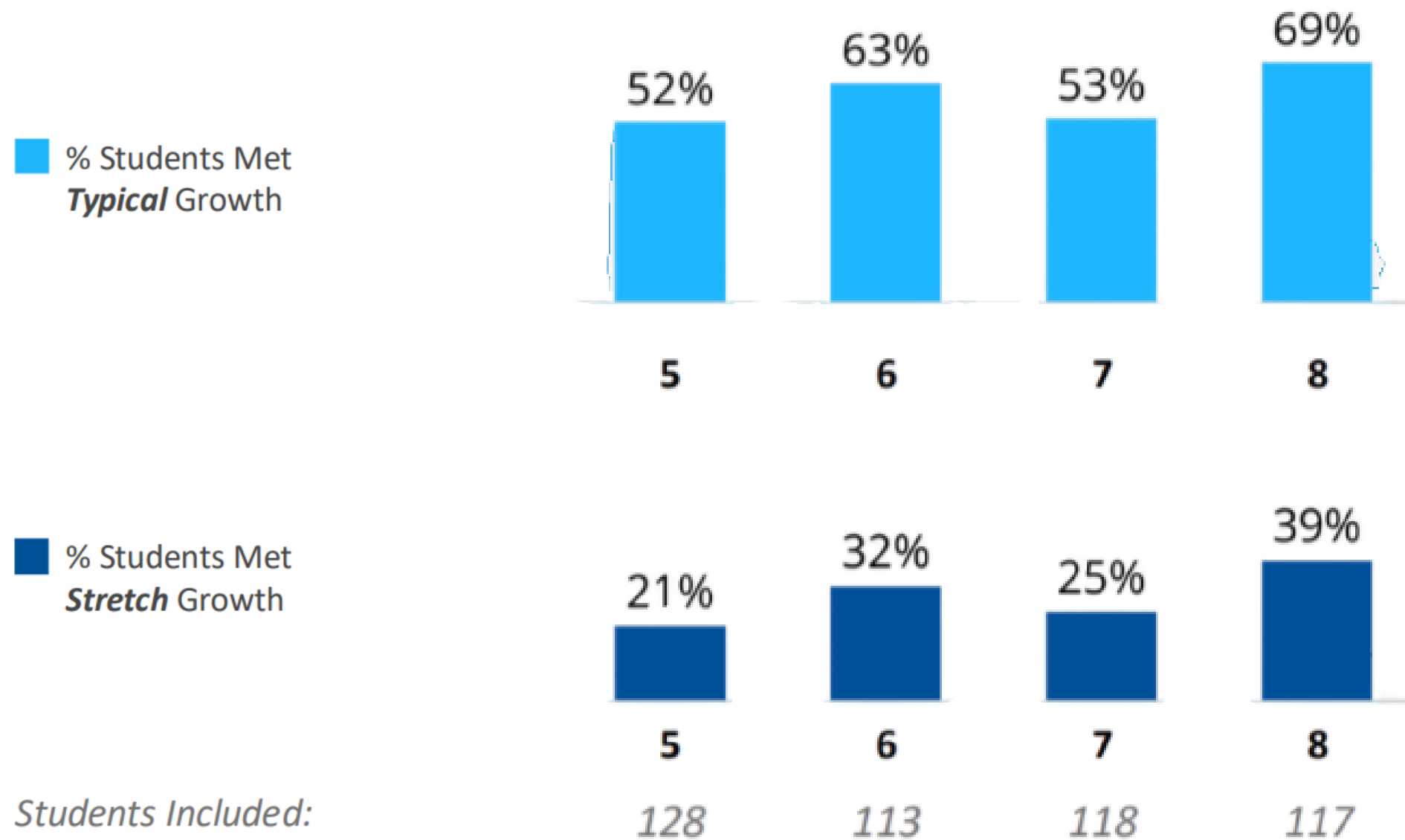
60% of students will make their individual growth goal based on iReady Math for grades 5-8.

# READING GROWTH

Reading

## How Are Students Progressing Toward Typical and Stretch Growth?

% Students Who Met Typical and Stretch Growth



Students Included:

# READING ACTION STEPS

## Collaborative Planning:

- Engage in ongoing Professional Learning Community (PLC) collaboration.
- Conduct structured peer observations to strengthen collaboration and instructional practice.

## Data-Driven Instruction:

- Establish individualized reading goals for students and regularly monitor progress.
- Monitor intervention fidelity while maintaining current student goals and progress data.

## Targeted Instruction:

- Use flexible grouping and differentiated small-group instruction to address student needs.
- Collaborate with Multilingual teachers to design scaffolded, grade-level reading instruction that ensures equitable access for all learners.

## Instructional Excellence and Student Engagement:

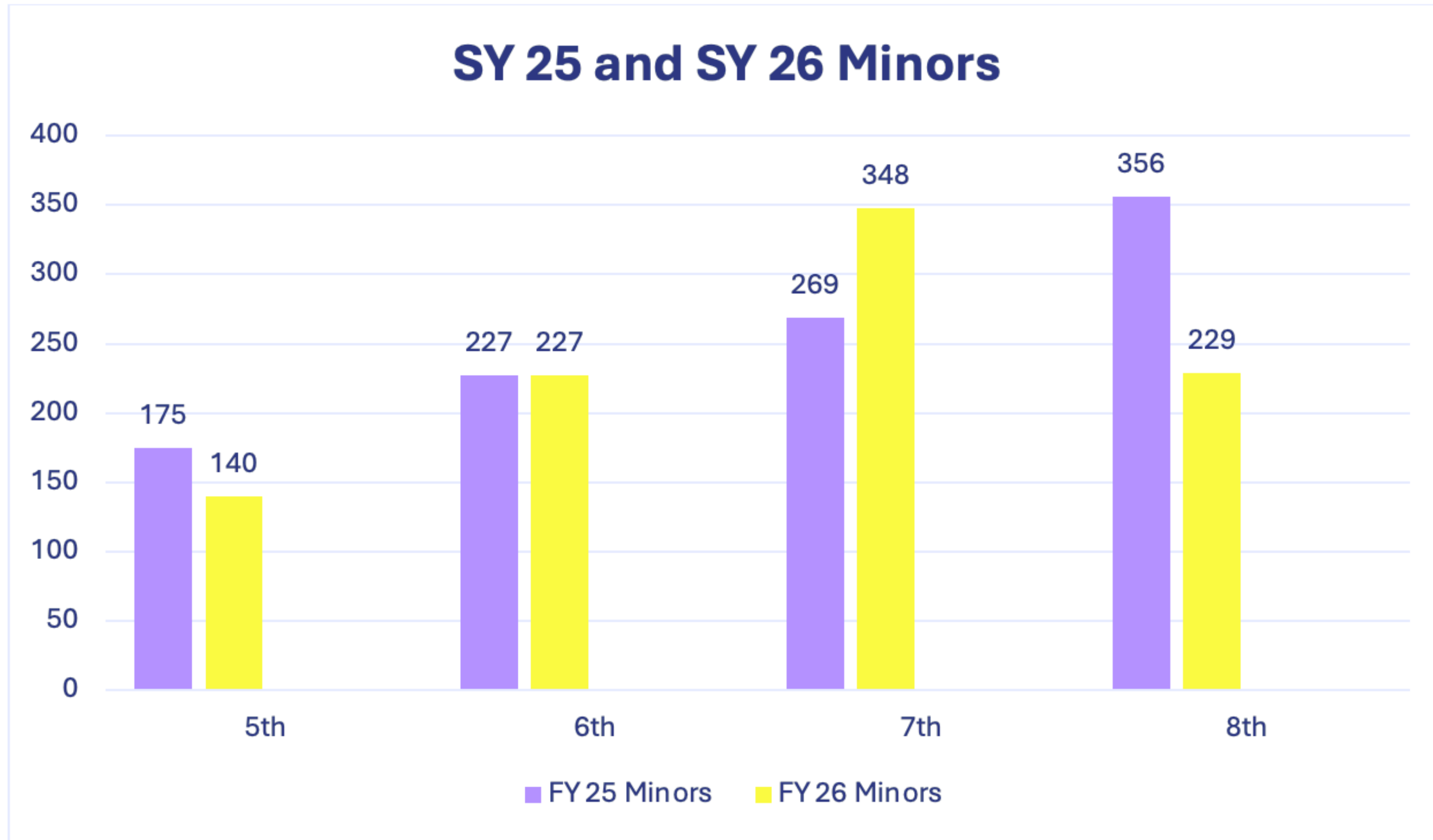
- Implement consistent schoolwide instructional practices that increase student engagement and promote high-quality learning experiences.

# READING GOAL

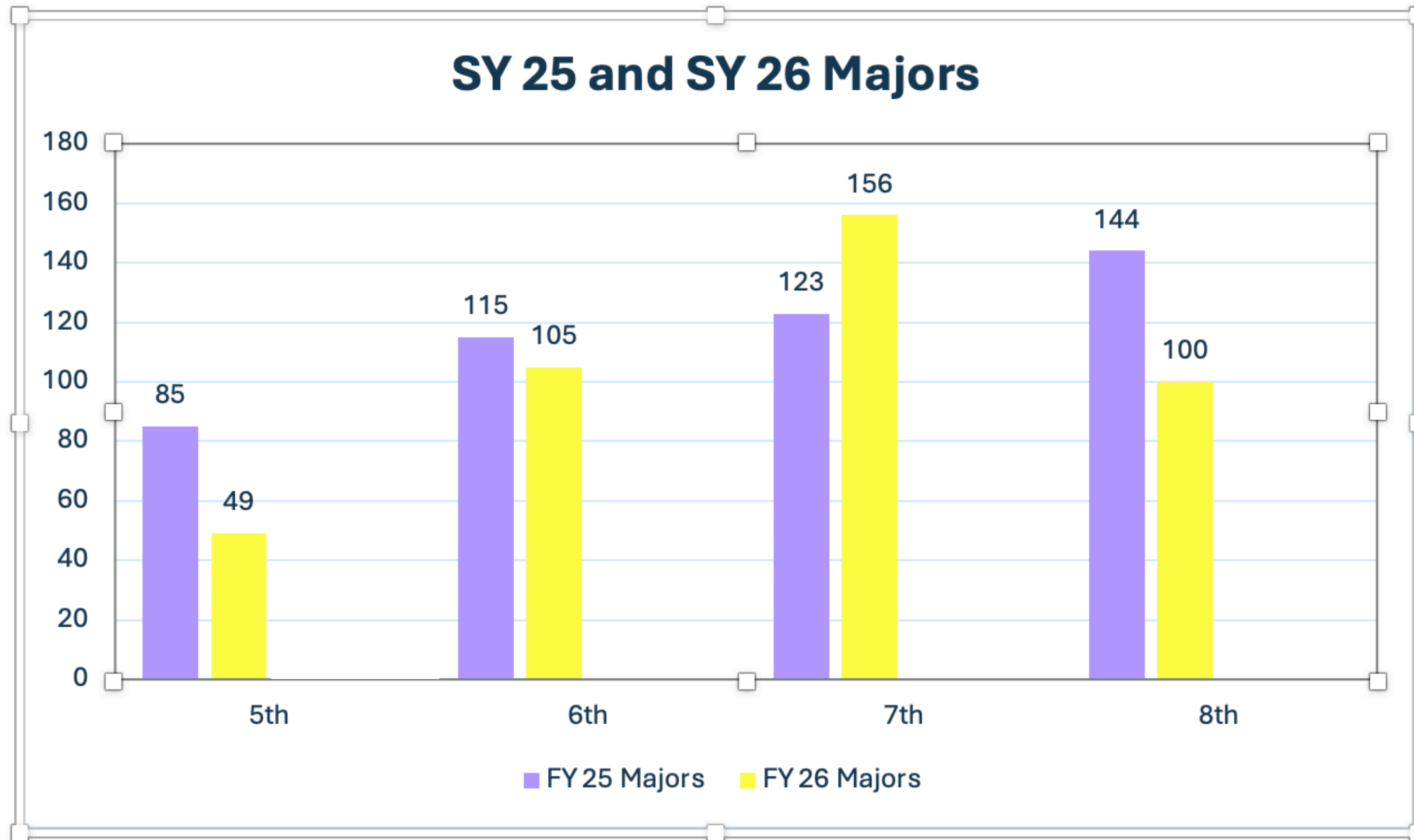
## Goal 2: Reading Achievement

65% of our students will make their individual growth goal based on iReady Reading for grades 5-8 from Fall 2026 to Spring 2027.

# 24-25 & 25-26 Minor Referrals by Grade



# 24-25 & 25-26 Major Referrals by Grade



# SEB ACTION STEPS

## Staff Capacity:

- Provide teacher pd focused on behavior regulation, de-escalation strategies, and effective classroom management.
- Conduct weekly grade-level problem-solving reviews of behavior data to identify trends and guide responsive supports.

## Student Support and Intervention:

- Implement weekly student social-emotional and behavioral self-assessments through PBIS Rewards.
- Provide targeted supports and mental health services for students identified as at risk.

## Positive School Culture and Expectations:

- Promote the GilesMade mindset through PBIS Rewards.
- Teach, model, and reinforce expectations outlined in the PRIDE Building Matrix.

## Family and Community Partnerships:

- Communicate district expectations and important information consistently with families.
- Foster positive relationships and strengthen school connections through collaboration with the School Resource Officer and NPD Social Worker.

# SEB GOAL

## Goal 3: Social Emotional Behavior Goal

Office discipline referrals in the school year 2026-2027 will decrease by 5% in comparison to school year 2025-2026.



# JAMES GILES SCHOOL

School Improvement Plan

2026-2027

